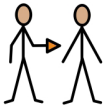




Barium swallow and meal



If you have stomach problems, visit your doctor.



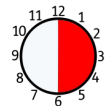
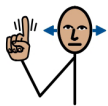
Your doctor might send you to hospital for a barium test.



A barium test is like an x-ray.



The test lets the doctor look at your stomach.



You must not eat or drink for 6 hours before the test.



Barium swallow and meal



At the hospital you will drink some barium.



You will swallow the barium as you are x-rayed.



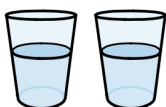
The doctor watches the barium moves to your stomach.



The test lasts about sixty minutes.



After the test you can eat and drink.



Drink plenty of water.